

D

C

B

A

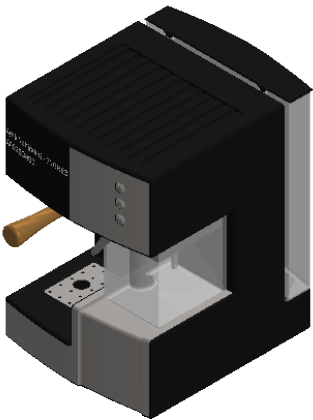
D

C

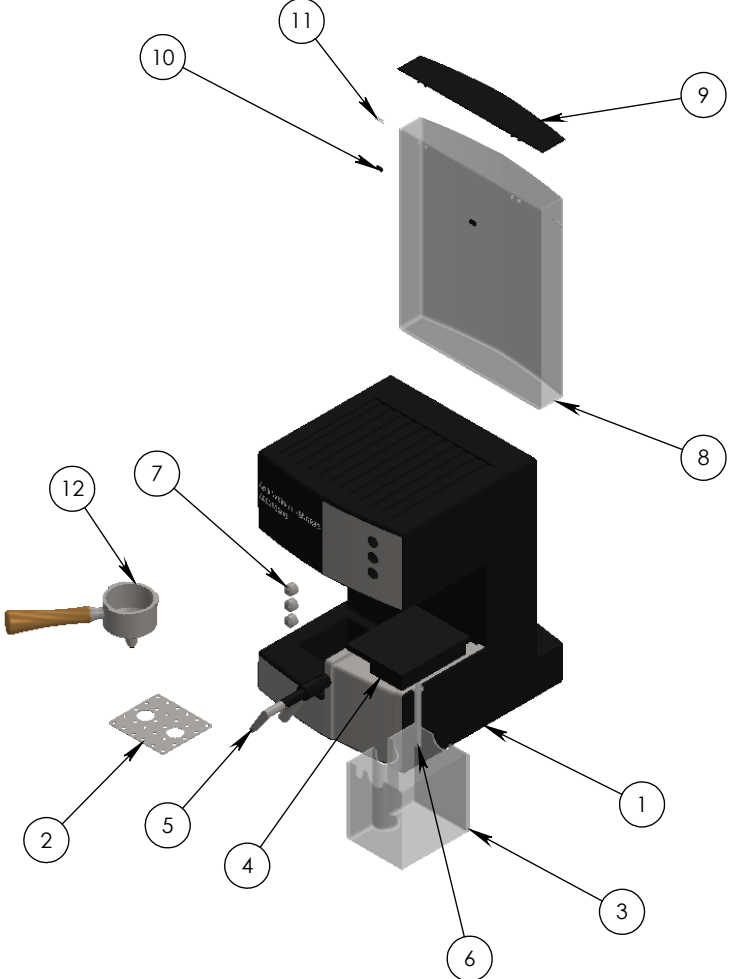
B

A

	8	7	6	5
	ITEM NO.	PART NUMBER	Material	QTY.
	1	main_body	PP Homopolymer	1
	2	drip_tray_cover	Plain Carbon Steel	1
	3	milk_reservoir_base	PP Homopolymer	1
	4	milk_reservoir_cap	PP Homopolymer	1
	5	milk_frother	PP Homopolymer	1
	6	milk_reservoir_tube	Silicon Rubber	1
	7	button	Plain Carbon Steel	3
	8	water_reservoir	PP Homopolymer	1
	9	water_reservoir_lid	PP Homopolymer	1
	10	water_reservoir_hinge	PP Homopolymer	2
	11	water_reservoir_hinge_pin	PP Homopolymer	4
	12	portafilter	Plain Carbon Steel	1



REV.	DESCRIPTION	EO	APPROVAL	DATE
P1	INITIAL ENGINEERING RELEASE	XXXX	REV. ENG	00/00/03



PROPRIETARY AND CONFIDENTIAL
THE INFORMATION CONTAINED IN THIS
DRAWING IS THE SOLE PROPERTY OF
<company name>. ANY
REPRODUCTION IN PART OR AS A WHOLE
WITHOUT THE WRITTEN PERMISSION OF
<company name> IS PROHIBITED

UNLESS OTHERWISE SPECIFIED DIMENSIONS ARE IN INCHES		STUDENT NAME: Ayrik Nabirahni	
DEFAULT TOLERANCES: FRACTIONAL = $\pm 1/32$ X.X = ± 0.15 X.XX = ± 0.10 X.XXX = ± 0.005 ANGLES = ± 1		STUDENT ID #: A00353890	
63 ✓ .002		PART NAME: ESPRESSO MACHINE COMPLETE ASSEMBLY	
BREAK SHARP EDGES .01 x 45		SIZE DWG. NO. 100-100-100	
APPROVALS RESP ENG		DATE 09/30/2025	
MATERIAL SEE BOM		REV. P1	
		SCALE 1 : 8	
		1 OF 1	